



SHANGHAI YONGXING ELECTRONIC SWITCH CO., LTD.



SHANGHAI YONGXING ELECTRONIC



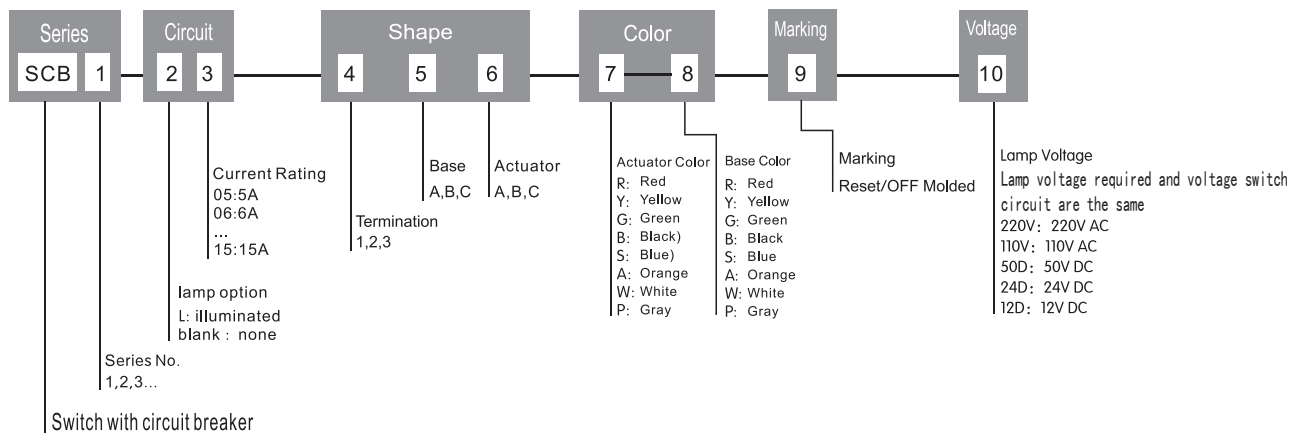
SCB series switch with circuit breaker



SPECIFICATION

Function	Provides power switching and circuit protection in a single unit
Rating Current	5-15A
Rating Voltage	AC125V 220V DC50V
Insulation Resistance	≥100MΩ DC500V
Dielectric Strength	AC 1500V 1min
Life(cycles)	>6000
Ambient temperature	-10℃~60℃

HOW TO ORDER



4 Terminal

Code	1	2
Diagram		
Note	Standard	Standard

5 Base

Code	Diagram	Panel cut out (mm)												
A		<table border="1"> <thead> <tr> <th>Panel thickness</th> <th>X</th> <th>Y</th> </tr> </thead> <tbody> <tr> <td>0.75-1.25</td> <td>28.35^{+0.1}</td> <td>13.00^{+0.1}</td> </tr> <tr> <td>1.25-2.00</td> <td>28.40^{+0.1}</td> <td>13.00^{+0.1}</td> </tr> <tr> <td>2.00-3.00</td> <td>28.45^{+0.1}</td> <td>13.00^{+0.1}</td> </tr> </tbody> </table>	Panel thickness	X	Y	0.75-1.25	28.35 ^{+0.1}	13.00 ^{+0.1}	1.25-2.00	28.40 ^{+0.1}	13.00 ^{+0.1}	2.00-3.00	28.45 ^{+0.1}	13.00 ^{+0.1}
Panel thickness	X	Y												
0.75-1.25	28.35 ^{+0.1}	13.00 ^{+0.1}												
1.25-2.00	28.40 ^{+0.1}	13.00 ^{+0.1}												
2.00-3.00	28.45 ^{+0.1}	13.00 ^{+0.1}												

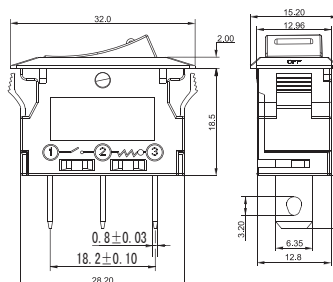
6 Actuator

Code	Diagram	Note	Code	Diagram	Note	Code	Diagram	Note
C		Arc-Shaped	A		Plane	B		V-Shaped

9 Marking

Code	1
Diagram	
Note	Reset/OFF Molded

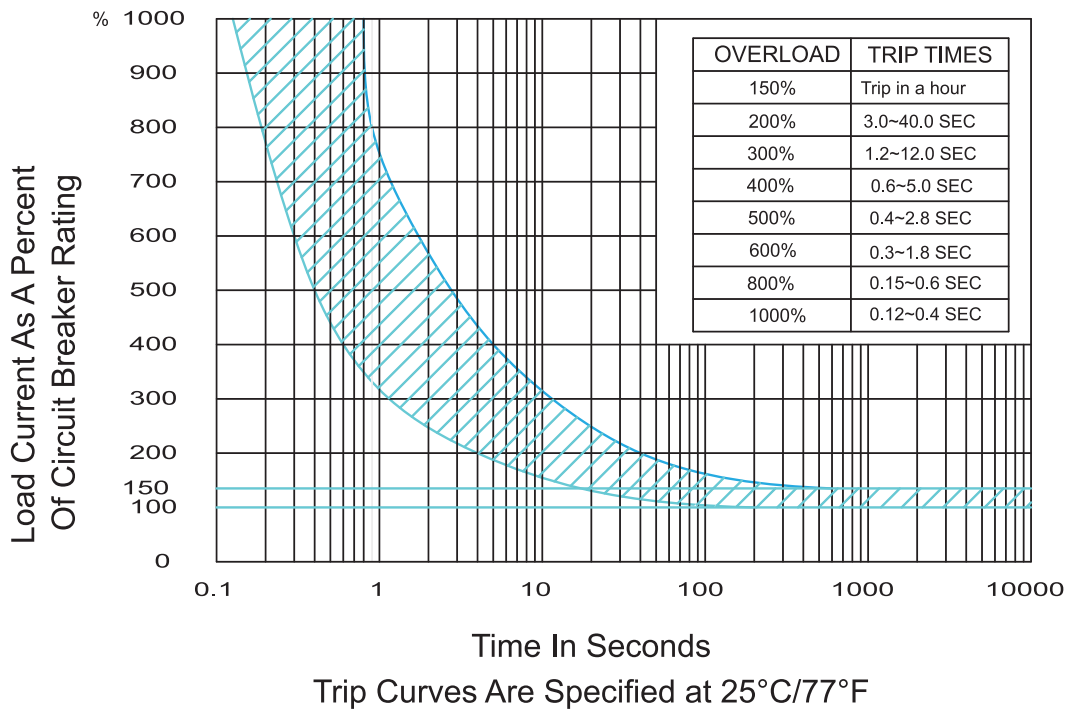
Outline Dimensions





Tripping curves and temperature compensation coefficients refer to the following

Trip Curves



Capacity Correction Factors For Ambient Temperatures

Current Rating Amps	Temperature								
	°F	+23	+32	+68	+77	+86	+104	+122	+140
	°C	-5	+0	+20	+25	+30	+40	+50	+60
5 to 6A		.75	.80	.90	1.00	1.05	1.10	1.20	1.40
7 to 15A		.80	.85	.95	1.00	1.05	1.15	1.25	1.40